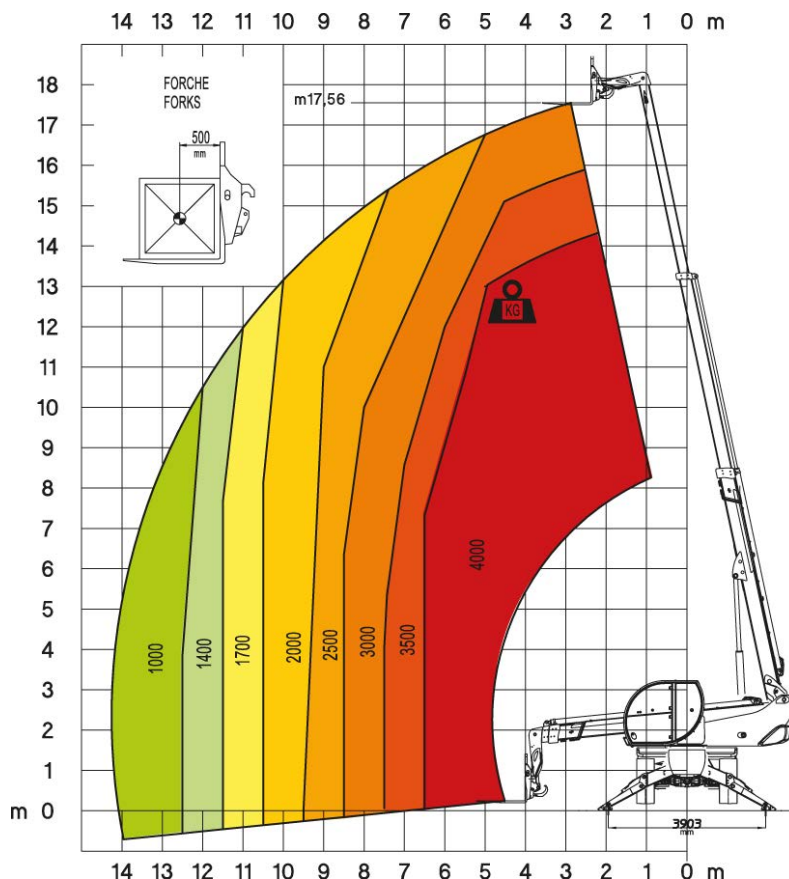


## RTH4.18 Smart



Load chart forklift with fork



### RTH 4.18 Smart

<b>MACHINE MODEL</b>	Rotating telescopic handler	RTH 4.18 Smart
	Maximum lifting capacity	4.000 kg (c.d.g. 500 mm)
	Maximum lifting height	17,56 m
<b>ENGINE</b>	Type	DEUTZ TCD 3.6 L4 stage IV
	Rated power	55,4 KW - 74 HP at 2.200 rpm
	Maximum torque	330 Nm at 1.600 rpm
	Displacements	3,6 l
	Cylinders	4 in line
	<b>HYDRAULIC</b>	Max. operating system pressure
<b>TRANSMISSION</b>	Type	Hydrostatic
	Model	Bosch – Rexroth
	Maximum pressure	500 bar
	Displacements	Variable displacement pump Variable displacement motor
	Gear box	2 speeds forward-reverse
<b>WEIGHTS</b>	Total unladen	15.300 kg
	Front axle unladen (boom retracted and lowered)	6.700 kg
	Rear axle unladen (boom retracted and lowered)	8.600 kg
<b>TANKS CAPACITIES</b>	Fuel tank	180 l
	AdBlue	10 l
	Hydraulic oil tank	190 l
	Engine oil tank	8 l
	System Cooling liquid	23 l

